

SPECIAL DISTRICT PUBLIC DISCLOSURE DOCUMENT

PALISADE METROPOLITAN DISTRICT NO. 2

As required pursuant to Section 32-1-104.8 of the Colorado Revised Statutes ("C.R.S."), this Public Disclosure Document has been prepared by Palisade Metropolitan District No. 2 (the "District") to provide information regarding the District.

DISTRICT'S POWERS

The powers of the District as authorized by Section 32-1-1004, C.R.S. and under its First Amended and Restated Service Plan, as approved by the City and County of Broomfield, Colorado ("City") on December 2, 2014, are to plan for, design, finance, acquire, construct, install, relocate, and/or redevelop certain public improvements, including, but not limited to, certain water, sanitation, street, safety protection, park and recreation, transportation, television relay and translator and mosquito control improvements and services within and without the District boundaries.

DISTRICT'S SERVICE PLAN

The District's Service Plan, which can be amended from time to time, includes a description of the District's powers and authority. A copy of the District's Service Plan is available from the Division of Local Government in the State Department of Local Affairs ("Division").

The Palisade Metropolitan District No. 2 is authorized by Title 32 of the Colorado Revised Statutes to use a number of methods to raise revenues for capital needs and general operations costs. These methods, subject to the limitations imposed by Section 20 of Article X of the Colorado Constitution ("TABOR"), include issuing debt, levying taxes, and imposing fees and charges. Information concerning District directors, management, meetings, elections, and current taxes are provided annually in the Notice to Electors described in Section 32-1-809(1), C.R.S., which can be found at the District office, on file at the Division, or on file at the office of the Clerk and Recorder of City and County of Broomfield.

DISTRICT MAP

A map of the District's boundaries is attached hereto as Exhibit A.

Dated this 16th day of December, 2014.

EXHIBIT A

District Map

12

PARCEL EXHIBIT

LOCATED IN THE SW 1/4 OF SECTION 34, TOWNSHIP 1 NORTH, RANGE 68 WEST OF THE 6TH PRINCIPAL MERIDIAN, CITY AND COUNTY OF BROOMFIELD, STATE OF COLORADO

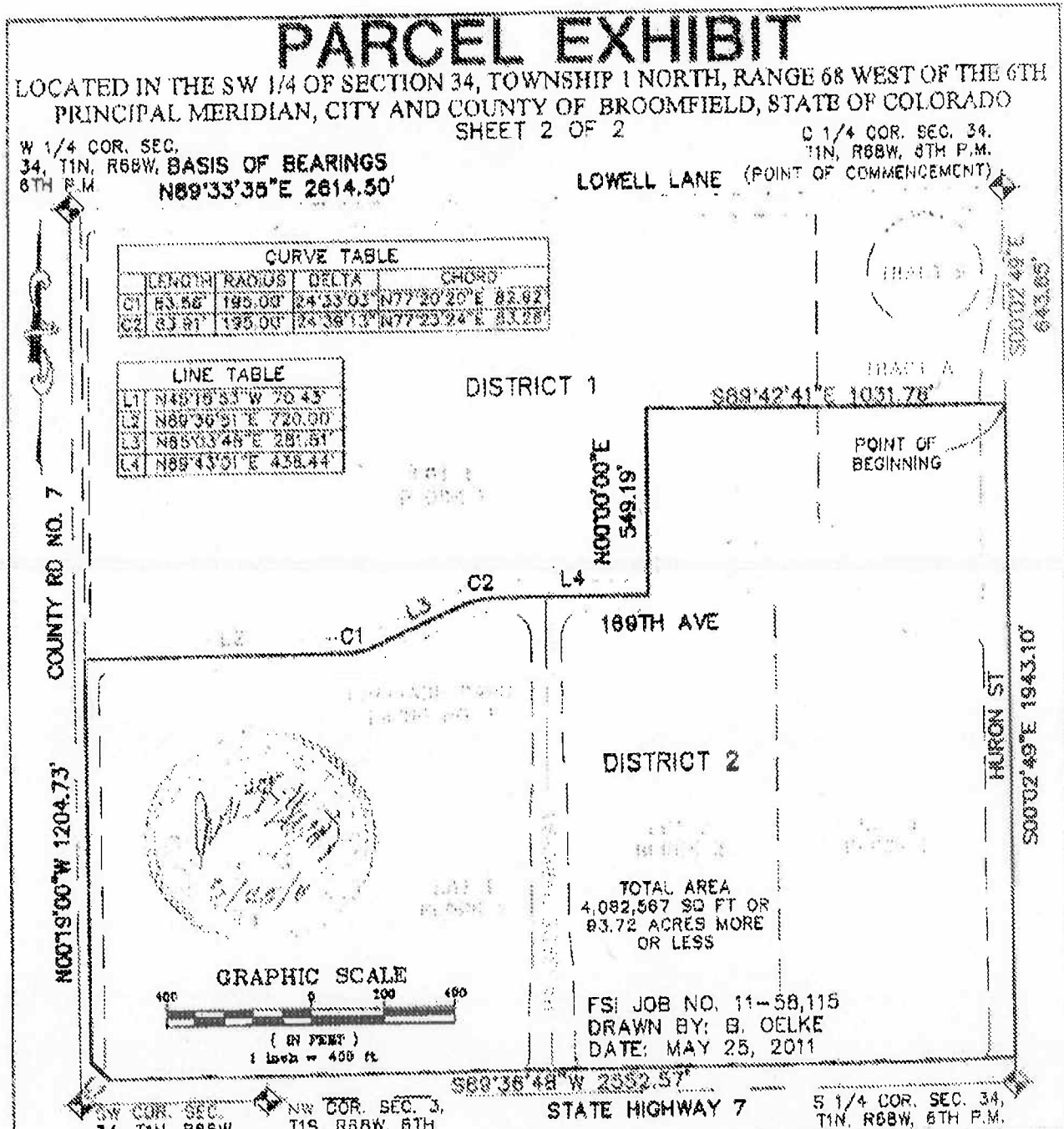
SHEET 2 OF 2

W 1/4 COR. SEC. 34, T1N, R68W, 6TH P.M.
BASIS OF BEARINGS
N89°33'38"E 2614.50'

E 1/4 COR. SEC. 34, T1N, R68W, 8TH P.M.
LOWELL LANE (POINT OF COMMENCEMENT)

CURVE TABLE				
LENGTH	RADIUS	DELTA	CHORD	
C1 63.88'	195.00'	14°53'03"	N77°20'20"E	82.82'
C2 83.91'	195.00'	74°38'13"	N77°23'24"E	83.28'

LINE TABLE	
L1	N45°18'53"W 70.45'
L2	N89°30'31"E 720.00'
L3	N85°03'48"E 281.51'
L4	N89°43'51"E 438.44'



TOTAL AREA
4,082,567 SQ FT OR
93.72 ACRES MORE
OR LESS

FSI JOB NO. 11-58,115
DRAWN BY: B. OELKE
DATE: MAY 25, 2011

THIS IS NOT A "LAND SURVEY PLAT" OR "IMPROVEMENT SURVEY PLAT" AND THIS EXHIBIT IS NOT INTENDED FOR PURPOSES OF TRANSFER OF TITLE OR SUBDIVISIONS OF LAND. THIS EXHIBIT IS INTENDED TO DEPICT THE ACCOMPANYING PARCEL DESCRIPTIONS. RECORD INFORMATION SHOWN HEREON IS BASED ON INFORMATION PROVIDED BY CLIENT.

Fluorons, Inc.
Surveying, Engineering & Geomatics

3925 IRIS AVENUE, #395
BOULDER, CO 80501
PH: (303) 443-7001
FAX: (303) 443-9830

655 FOURTH AVENUE
LONGMONT, CO 80501
PH: (303) 778-1733
FAX: (303) 778-4355

www.fluorons.com